

# The Assistant Referee



# General Duties

General duties of the assistant referee:

- Indicate when the ball has gone out of play
- Indicate what team should be awarded the ball
- Indicate for offside
- Indicate when a substitution is being requested
- Indicate when offences or other infringements of the rules have been committed that the ref could not see

Indicate when the ball has gone out of play

**In Play**



**Out of Play**



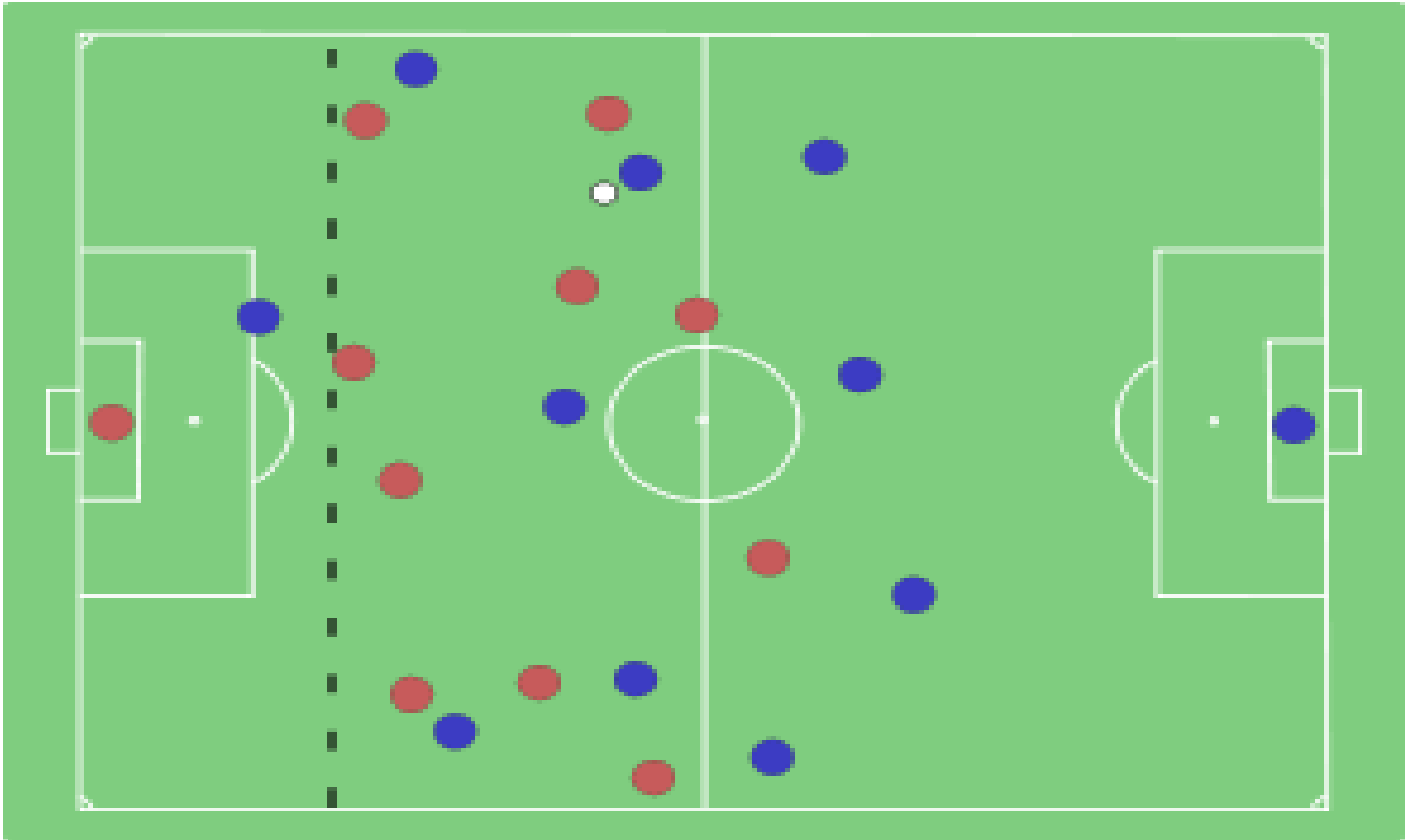
# Law 11 - Offside

- <https://www.youtube.com/watch?v=8XIH1JlgnOW>
- A player is in an offside position when he is in the opponents half of the pitch and closer to the opponents' goal line than both the ball and the second last defender (usually the last defender in front of the goalkeeper)
- A player is penalised for offside when he receives the ball, or **interferes** with play while in an offside position

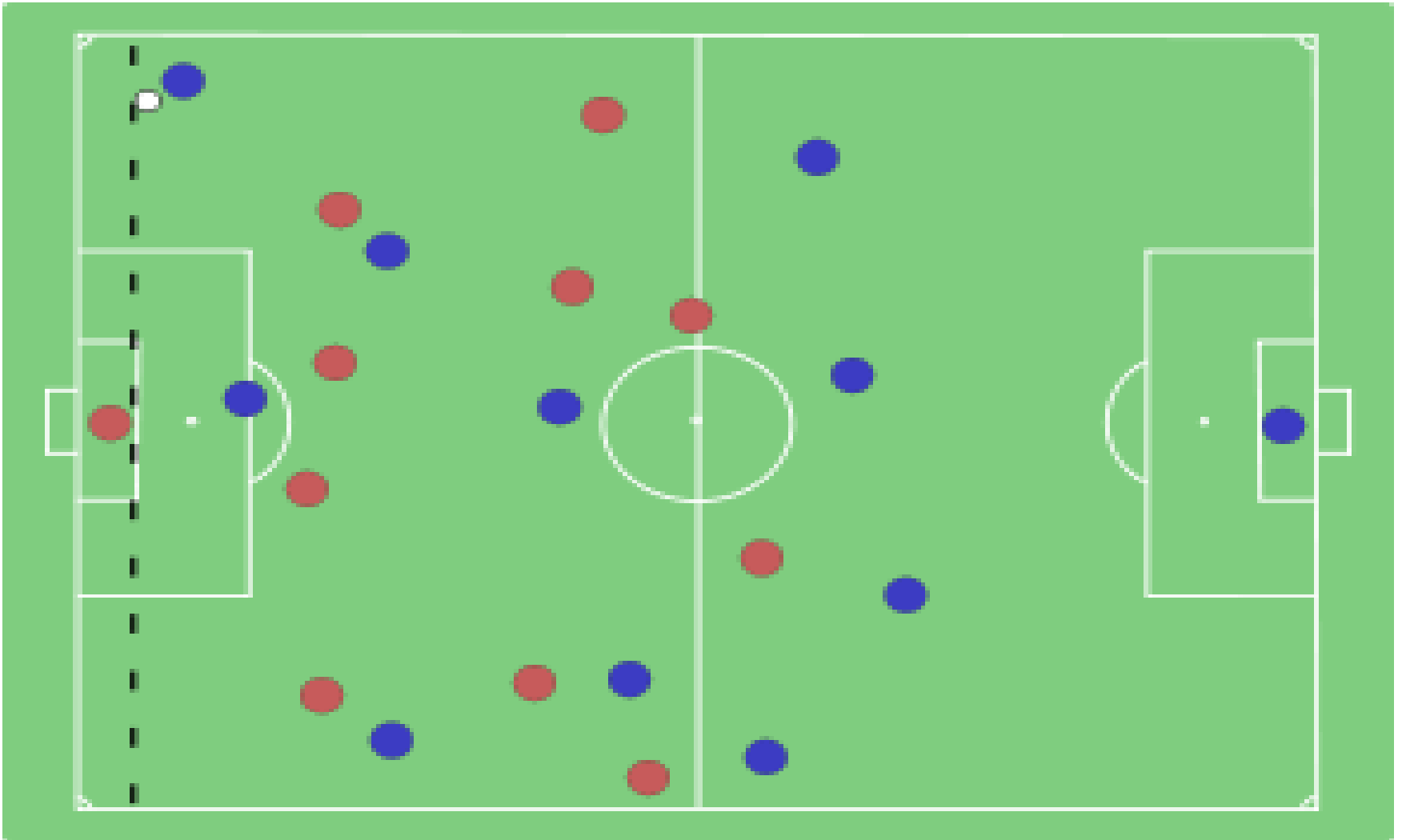
# Cannot be Offside if

- You are in your own half
- From a throw in
- From a goal kick (from the ground)
- You are behind the ball

# Offside



# Onside



“Behind the second last defender”





# Offside



# Not an offence to be in an offside position



Offside once you interfere with play



# Flag Signals



Indirect free kick



Advantage



Substitution



Offside



Throw-in



Direct free kick



Caution



Sending Off



Offside on the near side of the field



Offside in the centre of the field



Offside on the far side of the field

# Linesman tips

- Always positioned to the left of your teams goalkeeper
- When raising your flag for offside you must stop running and stay where you are until the referee acknowledges your signal
- When awarding **throw ins** don't be afraid to take a couple of seconds to think or too even change your decision

**ALL DECISIONS BY THE  
ASSISTANT REFEREE  
ARE ONLY ADVISORY  
TO THE REFEREE**

# General tips

- Be confident with your decisions, if you look confident in your decision, the ref and players will feel confident in your decision.
- The ref makes the final decision. If your not sure of a decision e.g. what team should be awarded a throw in, leave it to the ref.

# NOTES